



Dynamic  
Earth

# DYNAMIC EARTH ACCESS STATEMENT



2023

Scottish Charity No. SC020363

# Table of Contents

## General Information

- About Us Page 5
- Wheelchairs and Pram Users Page 6
- Visual and Hearing impairments Page 6
- Carers and Accessibility toolkit Page 6
- AccessAble Page 7

## Entrance and Pre-Arrival

- Getting Here Page 8
- By Walking Page 8
- Bicycles Page 8
- By Tram Page 8
- By Bus Page 8 - 10
- By Rail Page 11
- By Taxi Page 11
- By Car Page 11
- Car park and Lift Entrances Page 12 -16

## Entrance

- Amphitheatre Page 17 - 20
- Picnic Area Page 21
- Main Entrance Page 21 - 22
- Ticket Desk Page 22 - 23
- Cloakroom Page 24

## Tour, Education and Corporate Events

- Tour Entrance Page 25
- Exhibitions and Access on your Journey Page 26 - 34
- Learning Bases Page 35 - 36
- Corporate Areas Page 37 - 39

# Table of Contents, cont.

## **Other Amenities**

- Food Chain Café Page 40 – 41
- Natural Selection Gift Shop Page 42
- Toilets Page 43 - 44

## **Additional Information**

- Assistance Dogs Page 45
- Signage Page 45
- Staff Training Page 45
- Building Evacuations Page 45
- First Aid Page 46
- Public Wi-Fi Page 46
- Contact Information Page 46

# Table of Contents, cont.



# General Information

We would like to offer a warm welcome to all our guests. While this statement may not cover all guests' particular access needs, we hope that you find this information useful for making the most of your visit to Dynamic Earth.

## About Us:

- Dynamic Earth is a Five Star Visit Scotland Attraction located in the heart of Edinburgh.
- Dynamic Earth is fully accessible for wheelchair users and prams. We also have additional amenities for those with special access needs including transcripts, sensory maps, sensory bags, ear defenders, audio guides and an accessibility toolkit available on our website.
- Our tour experience invites you to take a journey through time to witness the story of planet Earth. Through a series of interactive exhibits, state of the art technology, and a 4D encounter, you will feel the heat of a bubbling volcano, face the chill of polar ice, and fly across the globe before crash landing in a tropical rainforest.
- We recommend 1 1/2 — 2 hours to visit Dynamic Earth. This includes doing the tour and a show in the Planetarium. The majority of the journey is free-flow, therefore it can be done in a shorter or longer amount of time if required.
- Hours of Operation:  
**\*Please check our website prior to your visit for the most updated opening hours.\***

## Wheelchair Users:

- The Dynamic Earth tour is fully accessible for wheelchair users. Our narrowest point along the tour is 88cm or 34.5in.
- There are three wheelchairs available for guest use on arrival at Dynamic Earth. These are free of charge to hire, and are subject to availability.

## Prams:

- The Dynamic Earth tour is fully accessible to most prams, including double prams. Our narrowest point along the tour is 88cm or 34.5in.

## Visual Impairment:

- Additional information about the exhibits is available through audio guides. Assistance dogs are also welcome.

## Hearing impairment:

- We offer transcripts in English and also offer a copy in large print. We advise contacting us before arriving to discuss any other accessibility requirements.

## Carers:

- We offer carers free entry to Dynamic Earth. Please speak to a member of staff at the Welcome Desk in order to collect a Partner Complimentary ticket.

## Accessibility Toolkit:

- The Accessibility Toolkit is designed to be used before, during, and after a visit. They can be accessed digitally on our website, downloaded and printed before you arrive, or provided on the day by a member of staff. The resources intend to give anyone with sensory difficulties the information they need to plan their visit and engage with the content at Dynamic Earth. The toolkit includes:
  - Sensory Map
  - Social Story (2 versions)
  - Now and Next symbols
  - Explorer cards
  - Gallery Guide (2 versions)
  - Sensory Bags



Image showing an example of sensory bags



We have partnered with AccessAble to enhance the accessibility information available for our facilities, before you visit. AccessAble's surveyors have visited Dynamic Earth to create a Detailed Access Guide. Please click here [Dynamic Earth | AccessAble](#) to access the information.

We strive to provide a customer-friendly experience and aim to make your visit as convenient as possible.

# Entrance and Pre-Arrival

## **Getting Here:**

### **By Walking:**

- Our address is Dynamic Earth, Holyrood Road, Edinburgh, EH8 8AS.

### **By Bicycle:**

- 5 Bike racks are available in front of the large globe, at the foot of the amphitheatre in front of Dynamic Earth.

### **By Tram:**

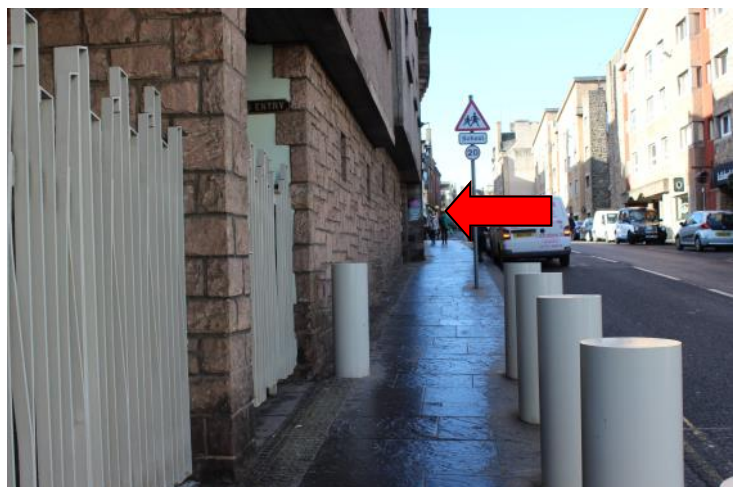
- The nearest tram stop is on Princes Street and is a 20-25 minute walk away or 5 -10 minutes by taxi.

### **By Bus:**

- The 35 stops outside of the Scottish Parliament at the bottom of the Canongate (The Royal Mile) and Dynamic Earth is about a 5-minute walk from there. Both stops are called Scottish Parliament. You will find some photos which can show the route from the bus stop on the following page.

## By Bus (cont.)

How to reach Dynamic Earth from the 35 Bus Route, beginning at Ocean Terminal (final destination Heriot-Watt University)



The closest bus stop on the 35 route starting from Ocean Terminal is at the Scottish Parliament. Exit the bus and turn right so that you are moving upward on the Royal Mile.



Turn left on to Reid's Close, and you will be able to see Dynamic Earth in the distance. This road is cobbled and uneven, but step free.



At the bottom of Reid's Close you will see the entrance to Dynamic Earth. For step-free access, make your way to where the red arrow indicates, look to the right, and you will see the ramp to take you to the front entrance.

## By Bus (cont.)

How to reach Dynamic Earth from the 35 Bus Route, beginning at Heriot-Watt University (final destination Ocean Terminal)



The closest bus stop on the 35 route from starting from Heriot-Watt University is at the Canongate Kirk. Exit the bus and turn right so that you are moving downwards on the Royal Mile. You will approach a zebra crossing—cross the road here, and continue towards Dynamic Earth following the instructions from Reid's Close.

### How to reach Dynamic Earth from the Lothian Buses Tour stop



You can alight from the bus right outside Dynamic Earth on the tour buses. These stop right next to the ramp, so you can follow round towards the main entrance to the building.

- Tour Buses operated by Lothian Buses and First Bus offer direct bus access to Dynamic Earth. The Edinburgh Tour, City Sightseeing Tour, and Bright Bus Tours all stop at Dynamic Earth. All tour buses depart regularly from Waverley Bridge. You can find a photo of the Dynamic Earth bus stop above.

## By Rail:

- The nearest train station is Edinburgh Waverley which is a main line station to all major destinations.
- It is a 15- 20 minute walk from Dynamic Earth or 5 minutes by taxi.

## By Taxi:

- The taxi drop-off point is located in the amphitheatre right outside of the building. Taxis can be ordered at anytime while inside Dynamic Earth if you require one after your visit. If you require a taxi please ask a member of staff for assistance and they will call one for you.
- We primarily use City Cabs or Central Taxis. Both have wheelchair accessible vehicles. Please inform a member of staff when ordering a taxi if you require this feature.

## By Car:

***\*Please note directions can be subject to change due to roadworks and closures\****

- If arriving by car to Dynamic Earth, we have a car park accessed on Holyrood Gait and also a drop-off/pick-up location in the amphitheatre.



Photos showing the drop-off areas for cars and taxis, and the disabled minibus drop-off area.

## By Car (cont.):

- The parking fee is on an hourly rate and the pricing structure can be found below. There is one pay machine located inside the car park. If you have any issue with the payment machine there is an 'assistance' button which will connect you to an onsite car park attendant. Additionally, a member of staff can be found in the Car Park Office.

Time	Day Rate
Up to 1 hour	£3.50
1 - 2 hours	£5.50
2 - 3 hours	£8.50
3 - 4 hours	£10.00
4 - 5 hours	£12.00
5 - 6 hours	£15.00
6 - 7 hours	£18.00
7 - 24 hours	£21.00

**\*All lost tickets should be reported to a member of staff  
or to the Car Park office\***

- The Dynamic Earth Car Park is located underneath the building with the entrance & exit located on Holyrood Gait.
- The surface of the car park is concrete. Anti-slip paint covers the pedestrian walkways at the front of the access stairs.
- Our Car Park is open 24 hours\*. Access to the car park is available through the building during opening hours. There is an outside pedestrian entrance/exit from Holyrood Gait which is open 24-hours.
- The car park is one level and has 120 spaces including 3 free-to-use electric vehicle charging points (Car Parking charges still apply), and 6 Accessible Spaces located near to the lifts. *(Please refer to car park map on the next page.)*
- The height restriction of the car park is approximately 2.3m. There is a disabled minibus parking area in the amphitheatre if the car park is full or all Accessible bays are in use.
- Two lifts are available from the car park to the main entrance. The width of the lift doors is 88 cm/34.5 in. The main entrance, ticket desk and café are located on level 3.

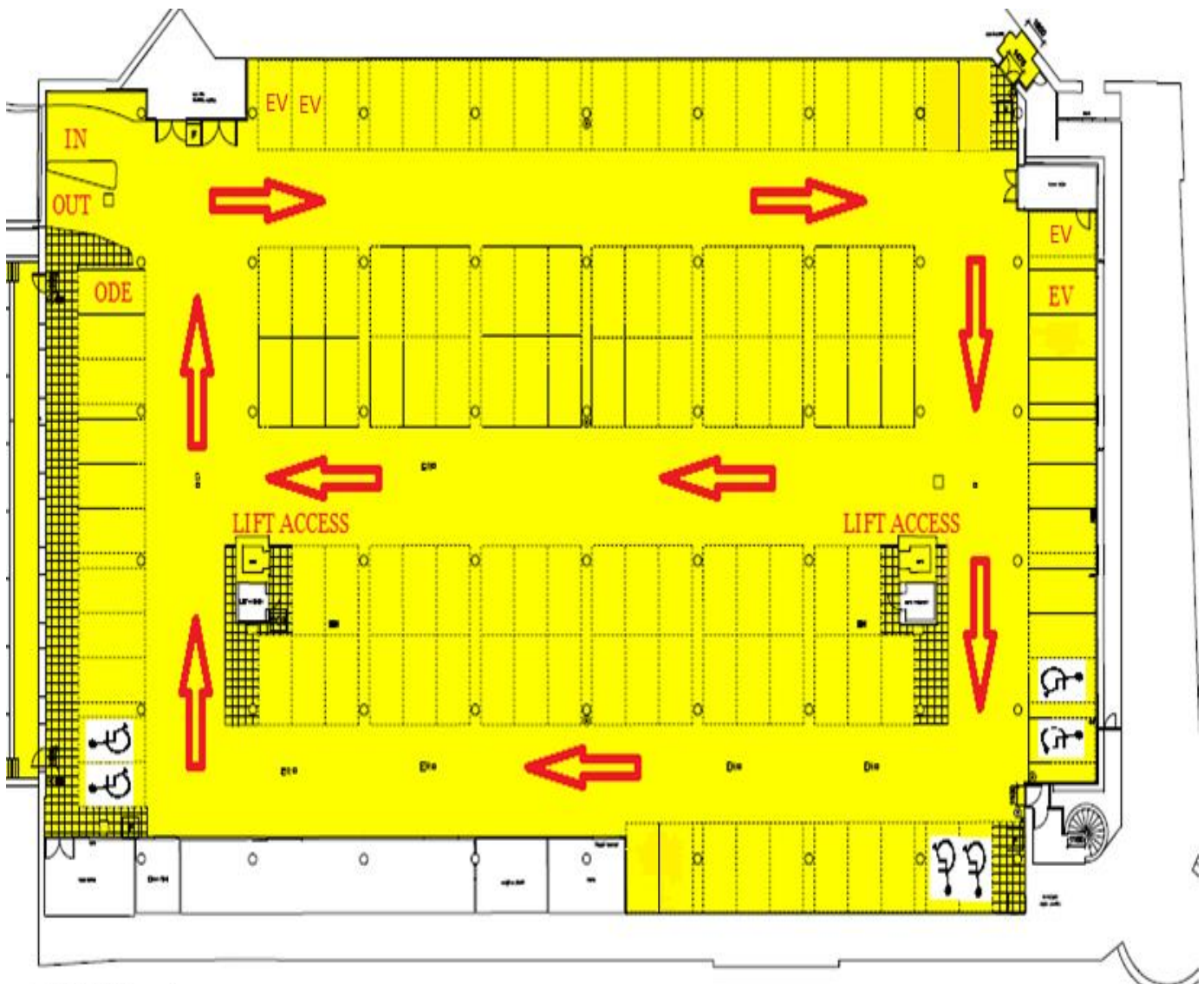
## By Car (cont.)



### Blue Badge Holders

- Parking for blue badge holders is free.
- Please present your blue badge to a member of staff at the main entrance on level 3 before leaving to ensure your ticket is validated.
- If you forget to do this or the building is closed you should use the assistance button on the Pay station where you can show your blue badge to the Car Park office via the camera on the pay station.

***\*Please note - For wheelchair and buggy users, lift access is only available during centre opening hours (if you require lift access or additional help when the building is closed you should use the assistance button at the pay station.)\****



Basement Floor Plan



DISABLED BAY

EV ELECTRIC VEHICLE CHARGING

ODE OUR DYNAMIC EARTH VEHICLES

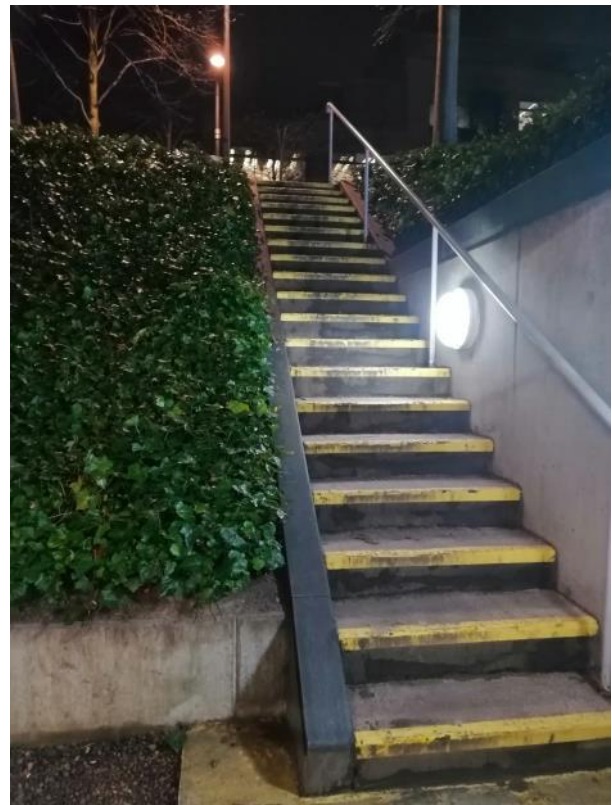


This is the street view from Holyrood Gait. The red arrows above indicate the two locations of stairs down into the car park, and the blue arrow indicates the Car Park office



- Street access to the car park is found on Holyrood Gait. There are two sets of stairs as indicated in the image above. There are 19 steps on each stair.
- Access to the Car Park Office is also found on Holyrood Gait. A member of staff is available 24hrs a day.
- The entrance and exit barriers have an intercom system if you experience any issues in the car park.
- The counter height in the Car Park Office is 86cm or 34 inches

Interior of the Car Park Office, open 24 hrs a day.



- The surface of the car park and the stairs is made of concrete. Anti-slip paint covers the pedestrian walkways at the front of the access stairs.
- The access stairs are available 24hrs a day, however lift access is restricted to the opening hours of the attraction. Please see the website for opening days and times.
- During hours of darkness, lights illuminate both of the access stairs. The stairs both have 19 steps.

**\*Please note - Pedestrians, please be aware the car park surface may be slippery when wet.\***

**Lift Dimensions :**



Lift from Car Park to Dynamic Earth.

**East Lift:**

Max Width – 89cm / 35in

Max Length – 150cm / 59in

Max Height – 198cm / 78in

**West Lift:**

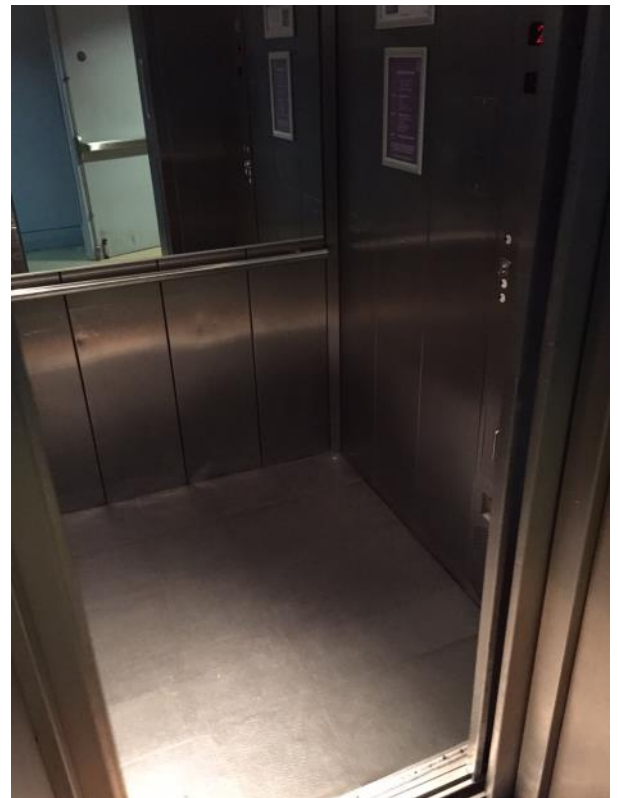
Max Width – 89cm / 35in

Max Length – 142cm / 56in

Max Height – 198cm / 78in



East side lift.



West side lift.

# Amphitheatre and Main Entrance

- If arriving at Dynamic Earth by bus, taxi, bicycle, or on foot you will enter the building through our main entrance by either using stairs or our ramp.
- There are 5 sets of stairs. The 4 main stairs are at the front of the building, the 2 larger ones available each have 36 steps in total. The 2 smaller stair cases each have 27 steps. One set of smaller stairs leads on to a smaller set of stairs which contains 9 steps and the other staircase leads on to a section of the ramp. A picture below shows the difference in size of staircase.

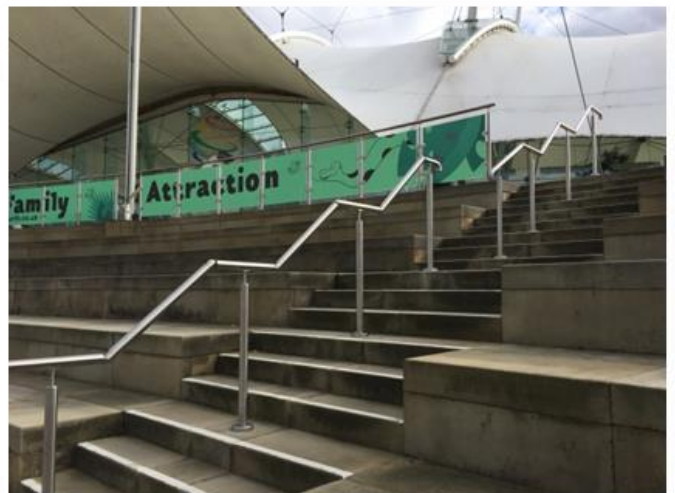


Step access from the amphitheatre to the main entrance, and the top of the stairs displaying the handrail and balustrade.

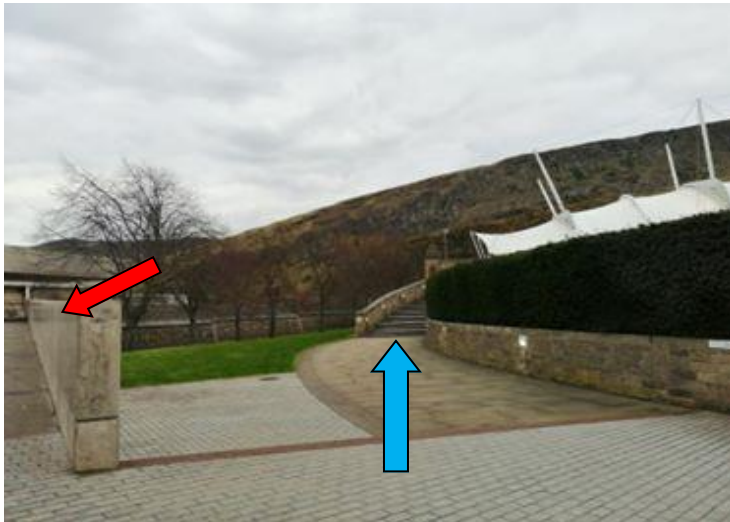


Two of the staircases. On the left is the smaller one with 27 steps and the right is the larger one with 36 steps.

Two closer views of the staircases



- The additional staircase is accessed at the left-hand side of the entrance to the amphitheatre. The staircase is not as steep as the 4 main ones. There is a little plateau every 3 steps and in total there are 39 in the first staircase and following a further gap there is an additional 9.
- The staircase can be found near the underpass by the Scottish Parliament building. There are hand rails going up the stairs.



The blue arrow above indicates the start of the staircase and the red arrow shows where the staircase is in relation to the underpass next to Scottish Parliament .

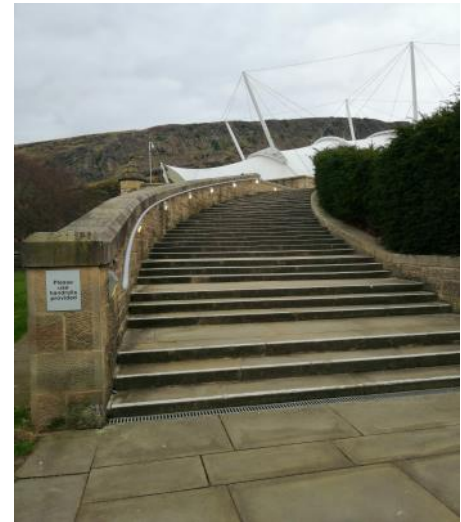
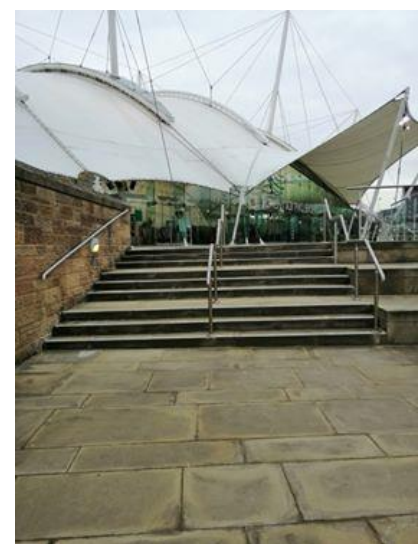
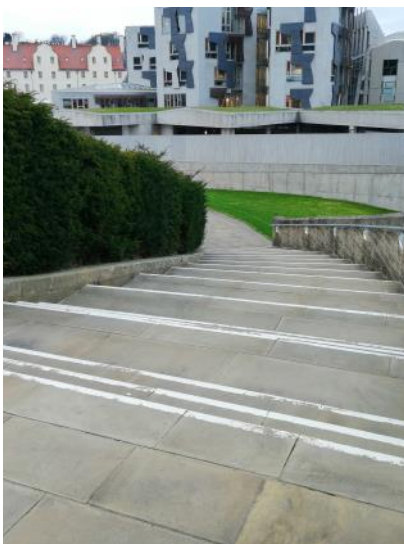


Image above showing the 39 steps up to the main entrance.



The image on the left shows the spacing every 3 steps. The image in the middle shows the short distance between the set of stairs. The image on the right shows the additional 9 steps required to get to the main entrance. Again, these stairs have the spacing every 3 steps.

- Wheelchairs and prams can access the entrance by using our ramp which extends from the bottom of the amphitheatre to the main entrance. A handrail lines the ramp.



The ramp up to the main entrance of Dynamic Earth can be accessed going up 9 stairs or using a smaller ramp ( the bollard pictured can be removed if required by contacting a member of the Security Team in the Car Park office).

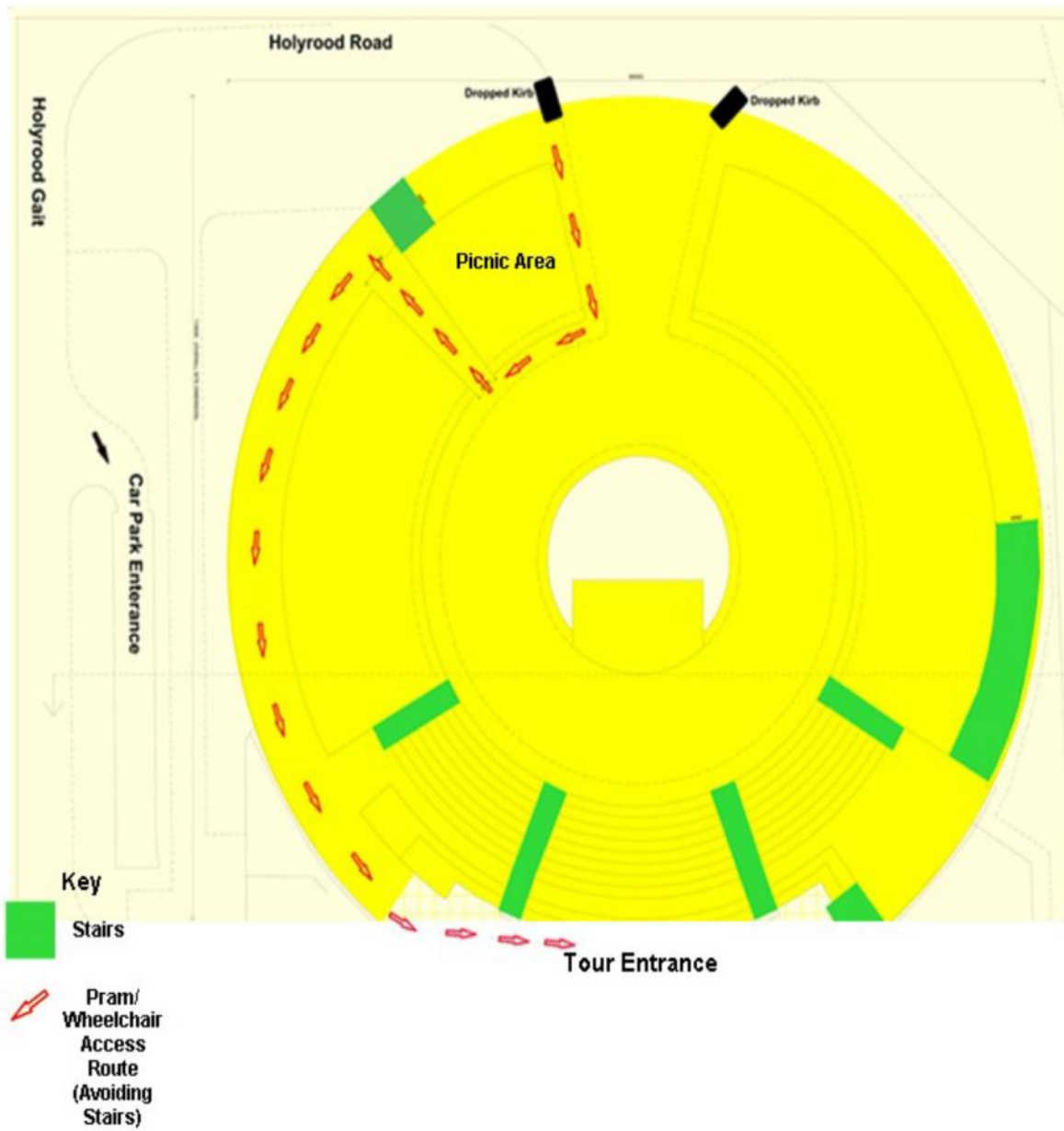


Images above showing the gentle curve of the ramp.



Main Entrance of Dynamic Earth showing double glass pull and two revolving door.

# Amphitheatre



This diagram gives an aerial view of the amphitheatre indicating the various means of reaching the main entrance.

## Picnic Area

- The Outside Picnic Area is located at the bottom of the amphitheatre near the bus stop. If exiting Dynamic Earth, it will be on your left hand side at the bottom of the ramp. Additionally, outdoor seating is provided at the top of the amphitheatre by the café, at the top of the ramp.
- The Picnic Area is surrounded by grass. Stone pavement is under the provided benches. Four tables are available. The chairs are at a height of 42cm or 16.5in. The tables are at a height of 77.5cm or 37.7in. Recycling bins are located next to the picnic area.
- The Outside Picnic Area is not exclusive to paying visitors; there is free public access to this area.



Outside Picnic Area at the bottom of the amphitheatre on the left. The picnic area on the right is the seating provided outside the café at the top of the amphitheatre.

## Main Entrance

- The main entrance is a double pull glass door. If both doors are opened the width is 246cm or 97in, each door is 123cm or 48.5in. A guide will be situated at the Welcome Desk on entry, and can assist with opening the doors if necessary.
- Please note that during high winds, the double glass doors will be locked and entry can be gained through the revolving doors. If access is required with a wheelchair or buggy, a guide will unlock the double doors to provide entry and will lock them again once inside.
- Please note the revolving doors are not automatic and must be pushed.
- Once inside the building, the Ticket Desk will be to your left and the café to your right. Both are on the same level. The floor is made of stone. The area is well lit by natural light. Seating is available with tables and chairs in several areas on this level.

**Main Entrance:** The red arrows indicate the revolving doors opened during high winds. The blue arrow indicates the main pull doors.

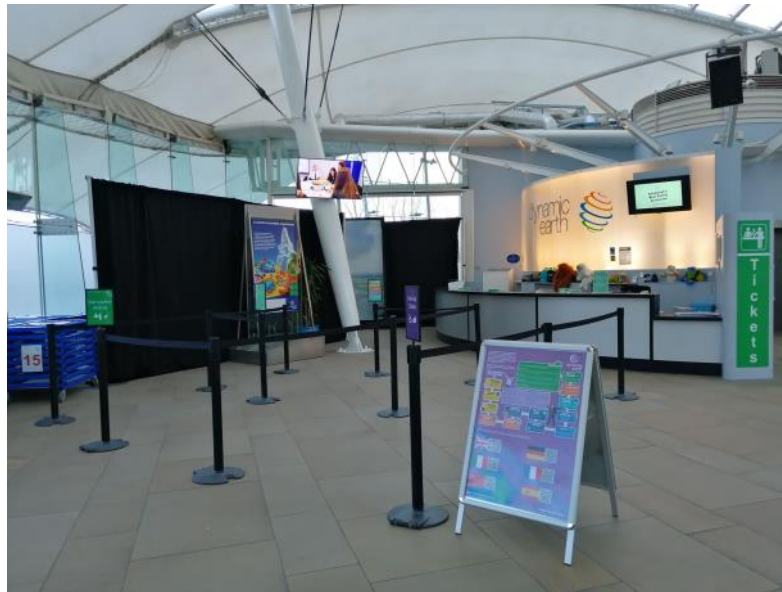
The image below shows the view when entering through the front entrance.



- When entering through the main entrance, on the left hand side are the Ticket Desk, entrance to the Ozone, and stairs and lift to the Gift Shop, cloakroom, First Aid room, toilets and Biosphere event space.
- On the right hand side is the café and seating areas, along with the lift and stair access to the Salisbury Suite, entrance to the tour, Planetarium, toilets, and Learning Bases.

## **Ticket Desk**

- Our ticket desk is located on the left hand side of the main entrance.
- Internally there are no steps necessary to reach the ticket desk from the main entrance. The area is lit by natural light and spot-lighting, and has a lowered section of the counter for accessibility.



**Ticket Desk Queueing system.**

- Any credit or debit card machine can be lowered down to any height if needed.
- The main tour is in English. Audio guides are available from the Ticket Desk in 5 different languages: English, French, Italian, German, and Spanish. These can be obtained at the Ticket Desk free of charge or can be downloaded free on Android or Apple devices via the Dynamic Earth website.
- Transcripts of the tour are available on request at the ticket desk in English. Transcripts are also available for films in our Planetarium (English only). Please note some of areas on the tour are dark and require transcripts to be read beforehand.
- We offer complimentary admission for carers which can be booked online or in person at the Ticket Desk.
- T-loop system is active at the Ticket Desk as well as in the Planetarium.
- Wheelchairs, Ear Defenders, Sensory Maps, and Sensory Bags are available on request at the Ticket Desk. These are free of charge to use. If required, speak with a member of staff at either the Welcome Desk or the Ticket Desk to access any of these items.
- Please hand all items back after visiting to a member of staff at the Ticket Desk, Welcome Desk, or in the Gift Shop.

## Cloakroom

- A cloakroom is located on the left hand side of the main entrance. It can be reached either by going down one flight of stairs or taking the lift from level 3 to level 2. The stairway is a winding staircase consisting of 20 steps and has handrails on both sides.
- The cloakroom has £1 coin-return lockers and two sets of coat rails. The lockers are at various heights. The highest locker height reaches 173cm or 68in. The shortest locker height is at 58cm or 22.8in. The coat rails are at two heights. The tallest rail is 189cm or 74.5in high. The shortest rail is 88cm or 34.5in high. Please note items left on cloak rail will be unattended and are left at the owners own risk.
- The Ticket Desk is able to provide change for the lockers in exchange for coins or notes. We are **not** able to do cashback using debit or credit to get change. The lockers only accept £1 coins.



Interior of cloakroom including lockers and coat rails.

# Tour, Learning, and Corporate Events

## Tour

### Entrance to Tour:

- The start of the tour is located on the west side of the building on level 2. This can be reached either by going down one flight of stairs or taking the lift next to the café to level 2. The stairway is a winding staircase consisting of 20 steps and has handrails on both sides. The flooring is carpeted all the way to the tour entrance.



Winding staircase towards tour entrance.



Lift buttons on lift on the Café side of the building.



The Lift and winding staircase located beside the café on level 3. Either takes you to the tour entrance, Planetarium, bathrooms, the Salisbury Suite and Learning Bases on level 2.

## Exhibitions and Access on Your Journey

- The tour is fully accessible to prams and wheelchairs. Ramps are available to assist with declines/inclines along the tour. Small declines are located in five galleries; Scotland's Time Lords, Casualties and Survivors, Discover the Deep, 4DVENTURE, and the Planetarium.
- Some areas along the tour are slightly darker, similar to a cinema, in order to view videos. Strobe/flashing lights are present in four galleries; Restless Earth, Human Animal, 4DVENTURE flight, and Rainforest. Restless Earth also has a floor which rocks back and forth to simulate an earthquake. An area is available to stand on that will not shake during the film. The Restless Earth gallery uses smoke machines to enhance the volcanic atmosphere. These galleries can be avoided by speaking to the guide located in these areas.
- Since videos are used in some galleries, those who are prone to motion sickness may be affected. These areas can be avoided by speaking to a guide. You can also choose to leave these galleries at any time.
- Guides are located in many areas of the tour. If you require any additional assistance while on the tour please speak to a member of staff.
- Seating areas are located at frequent intervals along the tour. In the first gallery, there are seats which can be taken with you on the journey. They can be folded out to form a seat or kept closed and work as a walking aid. If no longer needed at any point in time, these chairs can be given to a guide.



Foldable chairs found in the first gallery: Scotland's Time Lords.

***\*Please note - Guides are positioned throughout the tour and can always indicate where the nearest exit and bathrooms can be found.\****



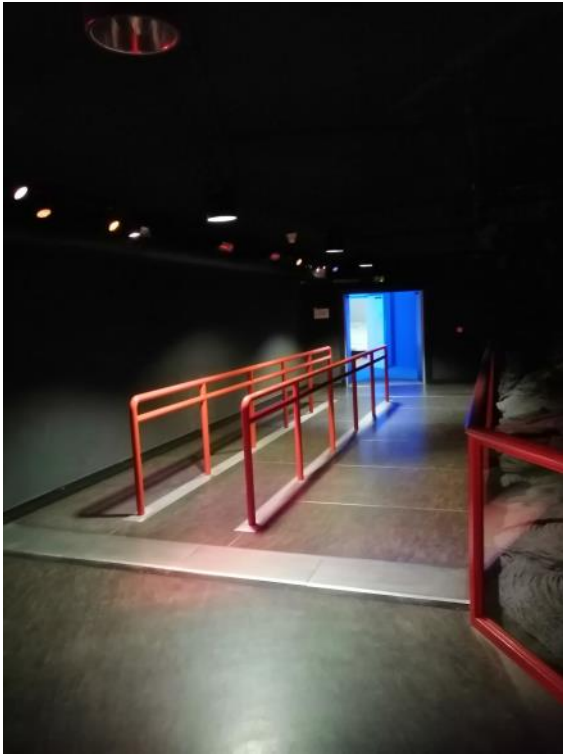
Large entrance way into the first gallery: Scotland's Time Lords.



The Time Machine. There is a gentle decline indicated by the white lines on the floor. The Time Machine can hold a maximum of 28 people and operates on a timed loop system.



Image of 'How it All Started': the gallery after the Time Machine. Guests using wheelchairs can use either row to watch the screens. Once in the gallery, it gets dark in order to see the screens better.



Restless Earth: between the silver floor plates the floor moves to simulate an earthquake. If you are either side of the silver floor plates, the floor does not move. This gallery also gets dark, has strobe lighting to simulate lightning, and can be loud. Additionally, there is smoke to make the volcano appear active. There is a guide outside this gallery who can provide any assistance and can help move you on to the next gallery if needed.

Image showing seating area in 'Shaping the Surface'. In this gallery the footage is that of a helicopter flying over glaciers, so slight feelings of motion sickness can occur. We encourage all visitors to sit in this gallery.



View of entrance leading from 'Shaping the Surface' into 'Casualties and Survivors', the bridge over the Primordial Soup, and the low camber access ramp to the left. In this gallery, there are many sounds activated by sensors; for example, a dinosaur crashing through the roof.

**\*Wheelchair users should use the ramp to the left, as the other ramp for guests has a steep camber which may be unsuitable for wheelchairs.\***



All of the doorways into 'Restless Earth', 'Shaping the Surface', and 'Casualties and Survivors' are accessed by going through large double doors as shown above. The doors open automatically in line with the pulse timings of the galleries but can also be opened manually by pushing or pulling.



Please note the flooring at the beginning of 'Casualties and Survivors' is not a smooth surface. It has little crater-like bumps to simulate the surface of a young planet Earth.



Seating areas throughout the tour, found in 'Casualties and Survivors', and 'Human Animal'.



**Left:** Image showing the beginning of 'Discover the Deep'. This area is filled with various sensory experiences at varying lighting. While unstaffed, a guide can be found in the 4DVENTURE ahead, or in Casualties and Survivors behind. To the left of the Earth model, a motion-sensor triggered film will play a short introduction called 'Our Connected Oceans' narrated by Dynamic Earth's Science Director, Dr. Hermione Cockburn.

**Right:** This image shows the second section: The Pioneers of Oceanography. There are two tactile interactives and a miniature ship model of the HMS Challenger. This section has a slight incline starting on the white flooring and continuing either side of the mast for approximately 4 metres.



**Left:** This is Scotland's Underwater World. In this section, the lights will dim as the projection on the wall descends to the seafloor off the coast of Scotland. This is a tactile interactive with sound that requires the use of a joystick to manoeuvre a spot light.

**Right and Below: Entrance to Modern Exploration. This is a wellHit section with several interactives. Two are visual using a magnifying glass and a microscope, one is auditory, one is tactile using a touch screen, and one is tactile using a joystick and controls. There is also a motion-triggered video.**





*Left: Exit from 'Discover the Deep' into Polar Extremes. This is a double set of double-doors. Each set is a push door.*

*Below: The next section, 'Polar Extremes' is cold with varying, low-level lighting. Be mindful of melting ice!*



Image of push doors leading from 'Polar Extremes' to '4DVENTURE.' A member of staff is present and can assist with holding doors open if required



Image of waiting area for the '4DVENTURE' flight to the Rainforest. This gallery has a gentle downward slope that is not indicated with floor markings

- Entering the 4D flight, a ramp is available that can be used to move wheelchairs in front of the first row of seats. Alternatively, wheelchairs can be

placed at the end of the front row.

- There is some space for buggies and prams to be placed if empty, or if they have a child in them they can be placed at the end of the row.
- There are multiple sensory experiences during the 4D flight such as 'snow' falling in the front and back and also multiple lighting changes. For more information, please speak to a member of staff or refer to our sensory map.



Seating in the 4D flight.

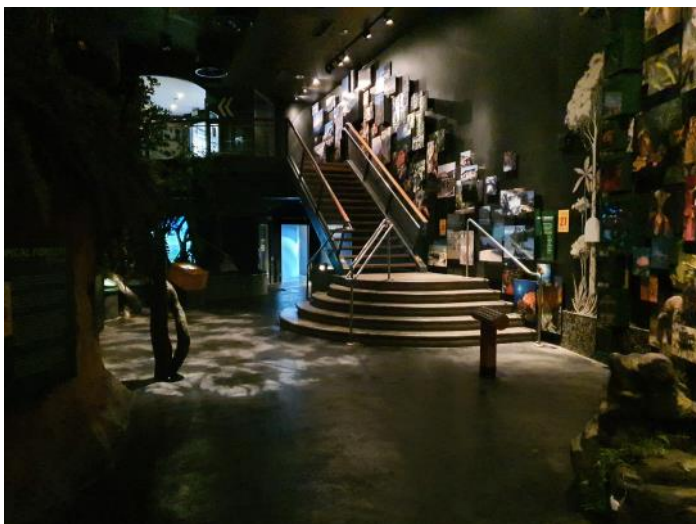


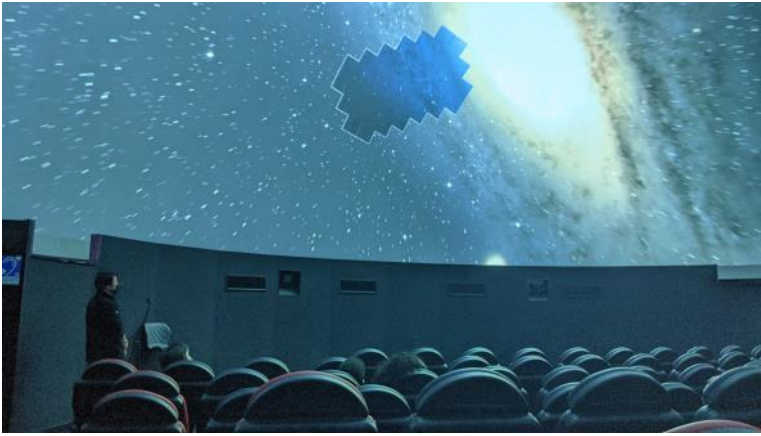
This ramp can be placed out by a member of staff if required.

- The Rainforest is the final gallery on the tour. In order to exit, guests can use the set of stairs with 20 steps in total. Alternatively, guests can use the lift which is located underneath the stairs, through the blue doorway. Flashes of light occur during rainstorms, however the guide in the gallery will be able to inform you when the storm is due to start.

***\*Please note the flooring in the Rainforest is not a smooth surface.\****

The images below show the two methods to exit the Rainforest





- The Planetarium is located on the 2nd level. The entrance is located atop the Rainforest stairs and beside the first gallery, Scotland's Time Lords. The exit of the Planetarium enters into the Gift Shop.

- The seating inside is slightly reclined and cannot be moved. In order to get to the seats at the back, there are two small steps. The red seats are for those who require easier access. There is also space for wheelchairs and prams in the first row.



Two images showing the seating in the Planetarium.



Ramp and steps at the entrance and exit of the Planetarium. On both sides, there are 3 steps, a ramp, and handrails.

## Learning Bases

- The Learning Bases are located on the second floor on the west side of the building. This can be reached either by going down one flight of stairs or taking the lift to level 2 on the café side of the building. The stairway is a winding staircase consisting of 20 steps and has handrails on both sides.
- The entrance to the Learning Bases corridor is a push or pull door measuring 88cm or 34.5in, however the glass panel can be pushed back making it wider. The doors to the individual classrooms are the same measurement.



- There are three individual classrooms. The entrance to Base 1 is a pull door, and the entrances to Bases 2 and 3 are push doors.
- Inside the classrooms, all desks are moveable to allow for full access. When using these areas a member of staff is always present and can aid with any access issues.
- The desks inside the classrooms are at a height of 72cm or 28.5in.

Left: entrance to Learning Bases



Exteriors of Bases 1, 2, and 3.



Interior of Base 1



Interior of Base 2



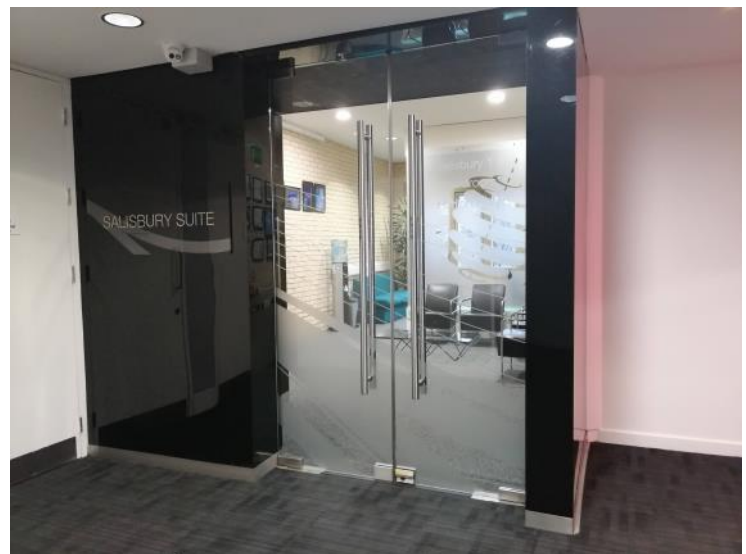
Interior of Base 3

## Corporate and Conference Areas

- Corporate events take place on all levels of the building. The Ozone and Stratosphere are located on level 3. The Salisbury Room, Hutton Room, and Boardroom are located on level 2. The Biosphere Suite is located on level 1.
- All areas are accessible by stairwell or lift. All stairwells have a handrail on either side. To reach level 2, there is a winding stairwell consisting of 20 steps. To reach level 3, there are two sets of winding stairwells consisting of 20 steps each. The smallest entrance into the event rooms is 88cm or 34.5in wide.
- Each event space can hold a variety of functions, therefore the spaces can easily be altered to accommodate any particular requirements. For more information, please ask a member of our Events staff or the function organiser.
- During events, staff members are located at each point to help with any access issues. Dietary requirements can be accommodated for all guests attending events.



Entrance way to the Ozone.



Entrance way to the Salisbury Suite.

- An event on level 3, in the Ozone or Stratosphere, is free of any doors except for the main entrance to the building. The main entrance doors are pull doors. The entrance to the Ozone is accessed via the entrance way shown above.
- An event on level 2, in the Salisbury Suite, is accessed via the stairwell or lift on the West side of the building. It contains 3 meeting rooms: the Salisbury Room, Hutton Room, and Boardroom. All doorways are push door access.



Images showing the interior of the Salisbury Reception on the left and the Hutton Room on the right.



Images showing the interior of the Boardroom on the left and the Salisbury Room on the right.

- An event on level 1 is in the Biosphere Suite on the East side of the building. It can be accessed via the left or down 2 sets of stairs.
- If taking the stairs, there is a push door located on level 2, beside the Gift Shop, to gain access to level 1.
- The Biosphere Suite can be used as one event space or split into 2 separate spaces, named Biosphere Green and Biosphere Blue. Access to either is through 2 sets of push doors.

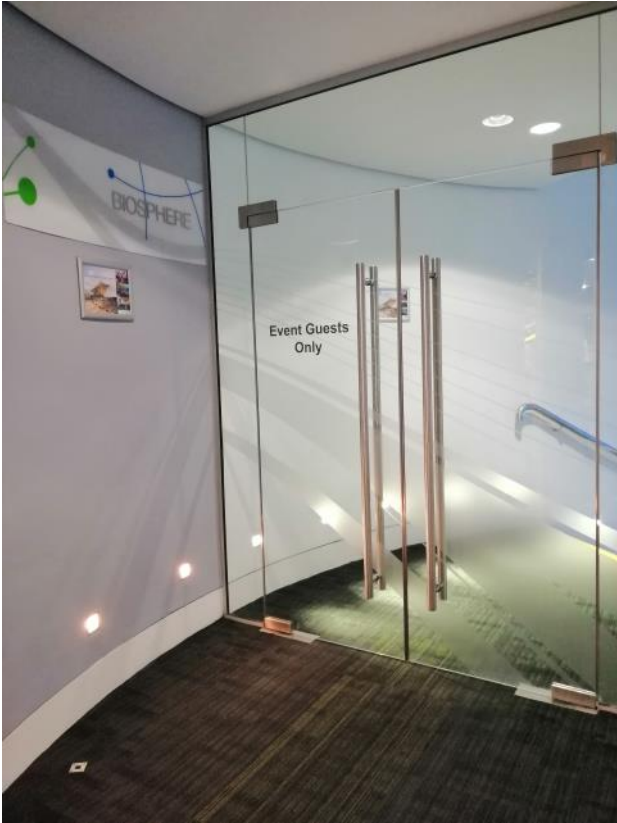


Image of the doorway on level 2 to gain access to the Biosphere.



Image showing exterior of Biosphere Reception and Biosphere Green doorways.



Image showing interior of the entire Biosphere Suite.

# Other Amenities

## Food Chain Café:

- The café is located on the right hand side of the main entrance of the building on level 3. The area is flat and level. The lighting is mostly natural with some spotlights.
- The café hours and days of operation vary seasonally. For opening times and food and drinks menu, please refer to the Dynamic Earth website.
- The café can be accessed without visiting the tour. Hot food is served between 12:00 and 15:00. A baby bottle and food warming area is provided in the café. The microwave rests on a table with a height of 70cm or 27.5in.
- The café menu has many products suitable for a variety of dietary requirements including vegetarian, vegan, gluten-free, and dairy-free. If you have any food allergies speak to a member of staff.



Café queuing area

Café entrance and host stand



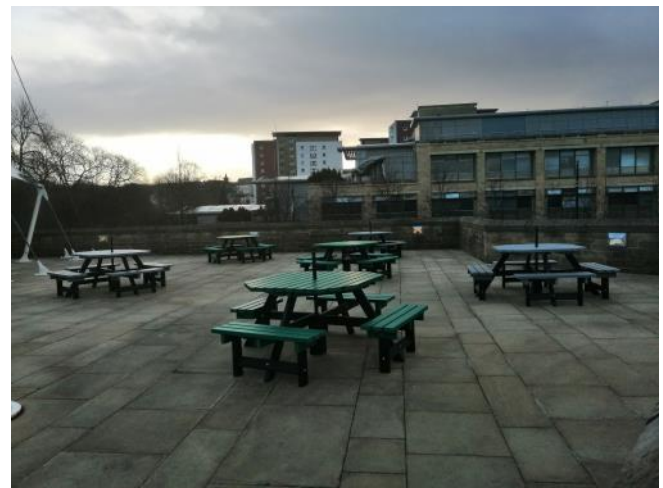
## Seating Areas

- There are multiple seating areas found on the right hand side of the main entrance on level 3.
- The Food Chain Café has an enclosed, table service seating area located in front of the café. The seating area has table and chairs which are moveable and can be adjusted to suit the needs of the visitors. The table height is 71cm or 28in.
- High chairs are available for small children.



Café seating area

- Additional seating can also be found on level 3. There are picnic tables and benches.
- The amount of seating can be limited and vary daily due to events or group reservations. Please speak to a member of staff if any further assistance is needed.



Two of the additional seating areas

## Natural Selection Gift Shop

- The gift shop can be accessed without visiting the tour. The gift shop hours and days of operation vary seasonally. Please check the Dynamic Earth website at [www.dynamicearth.co.uk](http://www.dynamicearth.co.uk) for updated information.
- The gift shop is located on level 2. It can be reached by taking the lift, located on the East side near the Ticket Desk, or walking down one flight of stairs. The stairway is a winding staircase consisting of 20 steps and has handrails on either side.
- The gift shop can also be accessed from the Planetarium. Customers can exit through along a small ramp or 3 steps. A handrail is also provided.
- The till counter height is 41cm or 16in and any card reader can be moved to any height necessary. The floor is also carpeted.



Natural Selection Gift Shop, showing the movable fixture units

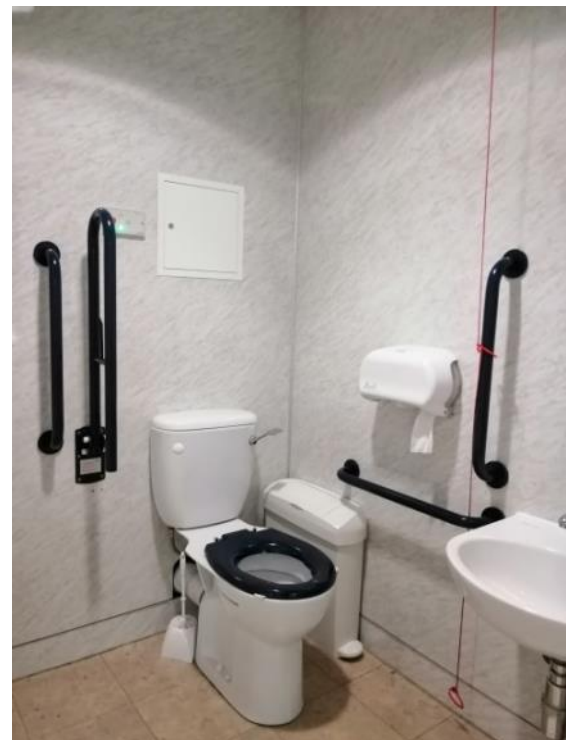
- All fixtures inside the shop are movable. The narrowest aisle is 82cm or 32in. If assistance is required to move a fixture to allow full access, please ask a member of the shop staff.
- Permanent fixtures line the sides of the gift shop. The highest wall is 188cm or 74in. If assistance is required to reach any objects on the shelves, please ask a member of the shop staff.

## Public Toilets:

- All public toilets are located on level 2. One set is located near the start of the tour the other is located next to the Gift Shop. These can be reached by taking the lift from level 3 to level 2 or walking down one flight of stairs. The stairway is a winding staircase consisting of 20 steps and has handrails on either side.
- The doors to the male and female toilets, on both sides, are at a width of 90cm or 35.5in. The toilets next to the Gift Shop on the East side of the building are two sets of single doors. The first is a push door and the second is a pull door. The toilets next to the tour entrance on the West side of the building are also two sets of single doors. The first and second doors are both push doors.
- Accessible & Gender Neutral toilets are available, one on each side of the building. Both are equipped with handrails and a red emergency pull cord. The toilets in the Accessible bathroom are at a height of 46cm or 18in. The sink is at a height of 69cm or 27in.



Interior of Accessible toilet and baby change on the West side of the building



Interior of Accessible Toilet on the East side of the building

## Public Toilets, cont.

- Two baby change facilities are available, one on each side of the building. The baby change on the West side of the building is located inside the Accessible toilet. The other is located in a separate stall next to the Accessible toilet on the East side of the building. The height of both baby changing stations is 89cm.



Photo of the baby change unit in the Accessible Toilets on the West side.



Photo of the separate baby change room on the East side.

- Toilets are not exclusive to paying visitors; there is free public access to our toilets.
- There are no toilets available on the tour. If a guest requires access to a toilet while on tour, please speak to a member of staff and they can guide you to the nearest toilet. We recommend all visitors to toilet before commencing the tour.

# Additional Information

## Assistance Dogs

- Assistance dogs are welcome at Dynamic Earth. We have a dog bowl available at the Welcome Desk. Please ask a member of staff for assistance.

## Signage

- Most of the signage in Dynamic Earth is white writing on an orange, purple, blue or green coloured background. Some is black writing on a white background.

## Staff Training

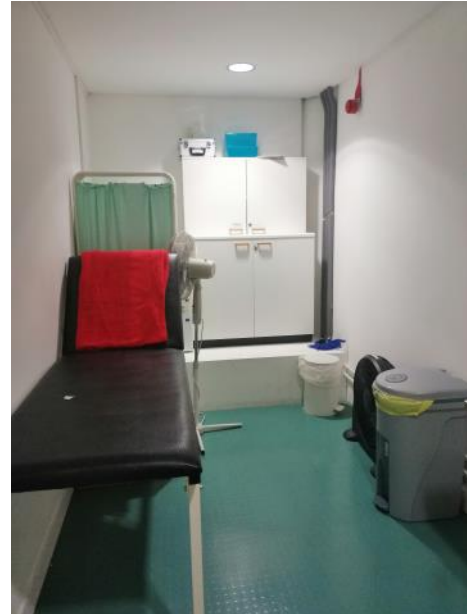
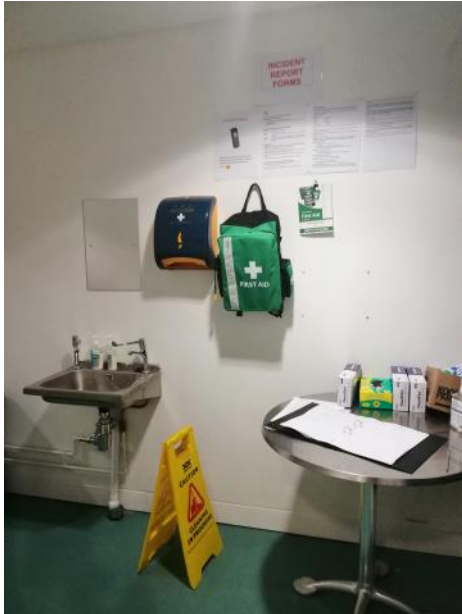
- As a minimum, all staff have basic disclosure through Disclosure Scotland and are required to adhere to Dynamic Earth's Working with Children and Vulnerable Adults Policy and Procedures.
- Learning and Engagement Team staff are cleared through Disclosure Scotland's Protection of Vulnerable Groups Scheme for working with children and vulnerable adults.
- Birthday Party Guides are cleared through Disclosure Scotland's Protection of Vulnerable Groups Scheme for working with children.
- Learning and Engagement Team, Birthday Party Guides and Dino's Children's Club staff have completed and passed training in Child Protection in Education.

## Building Evacuations

- In the event that the building needs to be evacuated, all guests can be assured that fully comprehensive plans are in place to evacuate all guests safely and efficiently. The evacuation procedures feature a complete 'sweep/check' of the whole building to ensure that all guests are evacuated. The evacuation procedures make provision for evacuating guests with additional mobility requirements as well as any guests visiting with push chairs, prams etc. Regular training and evacuation drills take place to ensure all staff are fully familiar with the procedures.

## First Aid

- During opening hours, there is always a First Aider on call. If you require first aid, please alert a member of staff. The First Aid room is located on level 2, on the East side of the building, by the Gift Shop. The room can only be accessed by a member of staff.



Interior of the First Aid room. It can only be accessed by a trained member of staff.

## Public Wi-Fi

- Public Wi-Fi is available throughout the building. The network name is 'Visitor - Dynamic Earth' and does not require a password.

## Contact Information:

- If you have any questions or feedback regarding any of the information in this statement or wish to make a personal enquiry about our accessibility, please feel free to contact us.
- Address: Dynamic Earth 112-116 Holyrood Gait, Edinburgh, EH8 8AS
- Telephone: 0131 550 7800
- E-mail: [enquiries@dynamicearth.co.uk](mailto:enquiries@dynamicearth.co.uk)
- Website: [www.dynamicearth.co.uk/](http://www.dynamicearth.co.uk/)
- Instagram: @dynamic\_earth
- Facebook: @dynamicearthedinburgh
- Twitter: @ourdynamicearth